

Real Estate Information:

Owner: Donna L. Runnels Estate

Address: 853 Memorial Avenue
Williamsport, PA 17701

County: Lycoming

Municipality: City of Williamsport

Zoning: R-3 — Residential

School District: Williamsport Area

Approximate Age: 1910

Parcel #: 73-6-408

Deed Book #: 681 **Pages:** 10-11

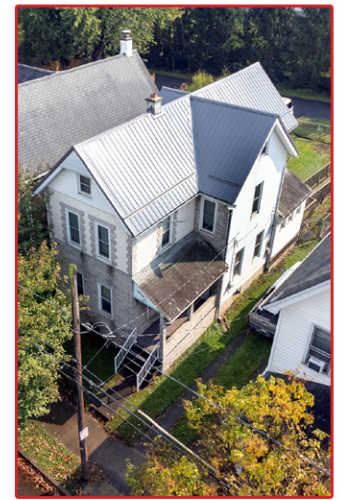
Approximate Parcel Size: 67.55' x 26.15'
x 64.35' x 26'

Approximate 2024 taxes: \$1,935

Approximate Area: 1,242 square feet

Property Description:

Style: 2 ½ story frame



First Floor: Enter a steel door, window, with a mailbox to a living room with carpet and ceramic tile by door. Five branch chandelier, access to second floor, kitchen and a family room with shelves and carpet. Kitchen is eat in, with carpet, set up for gas stove, microwave shelf, exhaust fan, dry goods closet, basement access, oak cabinets and cupboards, double bowl stainless steel sink with pot scrubber faucet and sprayer, formica counter and access to enclosed porch with lighting, shelves, windows and rear exterior access.

Second Floor: Access from living room, carpeted stairs lead to a hallway with scone lighting, carpet and attic access. A large bathroom with walk in shower, oak vanity, oak mirrored medicine cabinet with oak light bar and scone lighting. Bedroom with carpet, scone lighting and clothes closet with shelf. Bedroom with overhead lighting and 2 clothes closets with shelves.

Attic: Access from hallway, carpeted stairs, full, floored, 3 windows, lighted and walk up.

Basement: Access from kitchen, lighted, shelves on stairs, partial, concrete floor with drains, shelves and canning room.

Systems:

Electric: 100 amp breakers.

Heat: Natural gas-fired Sears steam boiler with radiators.

Hot Water: Bradford White natural gas-fired 40 gallon hot water heater.

Water: Public.

Sewer: Public.

Exterior: Metal roof, architectural asphalt shingle roof, thermopane windows, permastone siding, carpeted front porch with roof, aluminum siding, fenced yard, rear wood porch with roof, exterior motion spot-lights, off street parking and concrete sidewalks.

Property is graced by: Lilac Bush, Roses and Morning Glories and Flowering Cherry Tree.

At Settlement buyer assumes remaining contents.

Aerial map, brochure, photos, aerial and interior videos can be viewed online at RoanRealEstate.com.

